

Image shows non-CE

## The 5th Generation Linear EDM

- 10 year warranty on positioning accuracy
- Linear motor (X/Y/Z axis)
- Absolute linear scale (X/Y/Z axis)
- Ceramic components
- Linear motor cooling unit
- Dielectric fluid cooling unit
- SVC circuit
- "SGF2" Nano-Wear Discharge Unit
- TMM3
- Improved Ease of Operation
- NC operation panel
- Remote controller
- LN Professional software for optimum condition search
- Intelligent Q<sup>3</sup>vic EDM
- 3-side Rise and fall work tank
- 15" TFT Colour Screen
- LAN interface
- USB port
- Totalising hour metre
- Work light

### Technical Specifications

X/Y/Z axis travel (mm)	850 x 520 x 420
Ceramic table dimensions (mm)	1100 x 700
Worktank dimensions (mm)	1400 x 950 x 500
Dielectric level (min ~ max, mm)	150 ~ 450
Max. workpiece weight (kg)	3000
Max. electrode weight (kg)	100
Distance from floor to table top (mm)	840
Machine tool dimensions (W x D x H mm, Incl. power supply and dielectric tank)	2060 x 3195 x 2900
Step resolution (mm)	0.0001
Machine weight (kg)	9000
Controlled axis	4
Air pressure (Automatic Clamping chuck, MPa)	0.65

### Dielectric tank

Dielectric fluid	Oil
Capacity (l)	835
Filtration method	Replaceable paper filter (MF-2400)

### C Axis (optional)

Resolution	0.001°
Rotational speed (min ~ max rpm, continuous)	2 ~ 20

### Options

Oscilloscope	High Precision Rotary Head, C axis
Active Power Restart (UPS)	Linear electrode changer Shuttle ATC
STP circuit (for hard metal cutting)	Automatic tool changer (ATC)
40A booster	Automation System: work piece changer, electrode changer and robots
80A booster	8-axis simultaneous control (Factory option)
120A booster	Custom colour
Left handed CNC specification (Factory option)	Extended work height (Factory option)

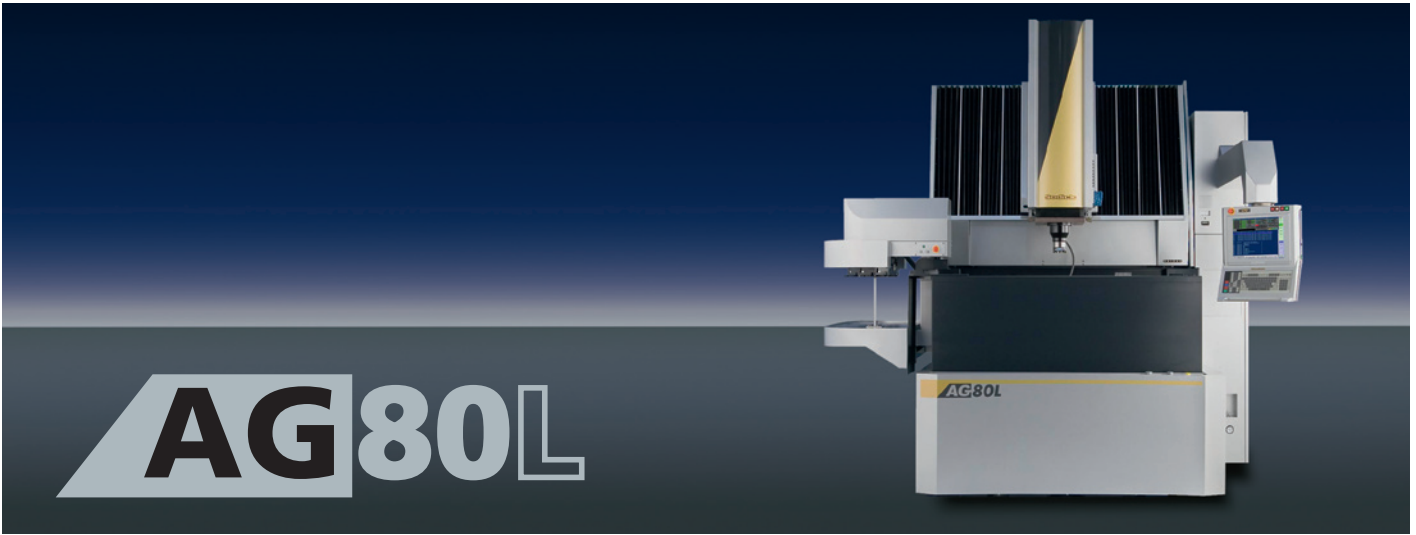
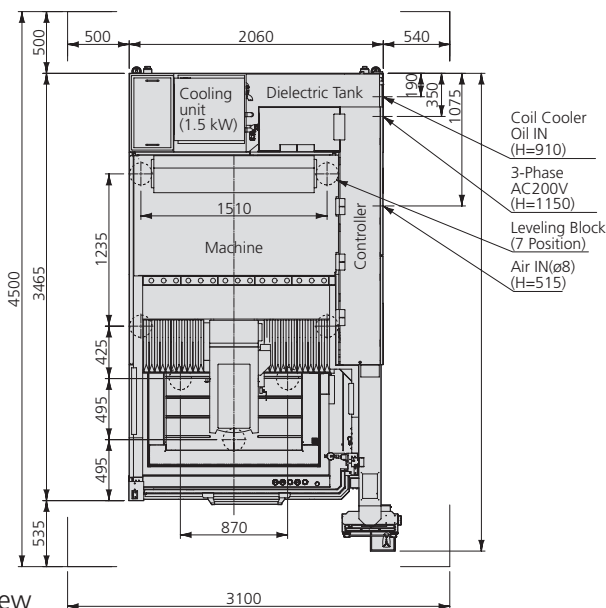
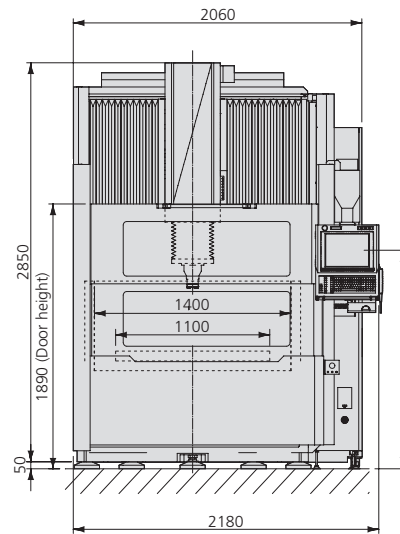
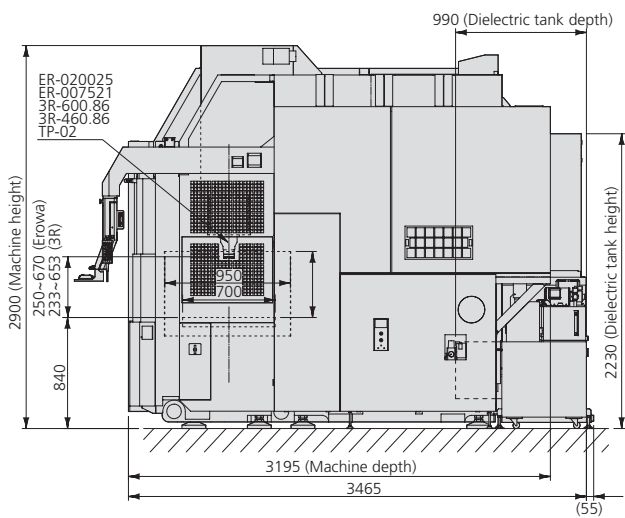


Image shows non-CE

Side View

Front View



Top View

· All CE spec machines have external transformer with dimension of ca. 650 x 460 x 540mm

**Sodick**

*create your future*

Sodick Europe Ltd.

Rowley Drive, Baginton  
Coventry, CV3 4FG  
United Kingdom

Phone +44 (0) 24 7621 4314  
Fax +44 (0) 24 7630 5680

Sodick Contact

email europe@sodick.eu.com  
online www.sodick.org