



VZ300L
VZ500L

Linear motor drive Wire-cut EDM

Linear Motor Drive

The VZ Series are equipped with Sodick's own Linear Motors on the X,Y,U and V Axes which are manufactured In-House and come with a 10 Year Accuracy Guarantee as standard. The Linear Motor's high-dynamic responsiveness and stability for precision machining do not diminish over time and remain maintenance free.

LN2W Power Supply

Sodick's VZ range of machines profit from the latest generation of power supply unit, which is capable of high-speed, high precision and high-efficiency machining. An NC control system based on modern operating system used in conjunction with the power supply delivers outstanding results.

High Standard of Performance

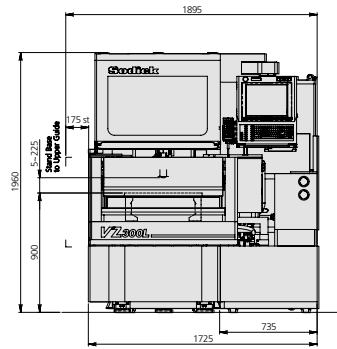
Standard features include a large worktank with vertical access door, the advanced corner control system, automatic dielectric level control, high quality machining circuit and ceramic components. The result – a versatile and high performance machine capable of a wide variety of applications.

Sodick

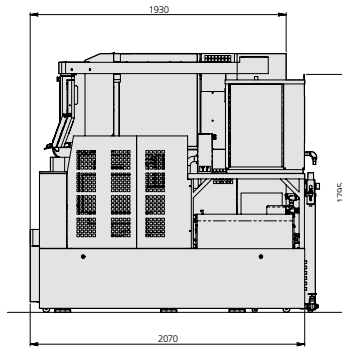
Nano&Solution

Specification VZ300L/VZ500L

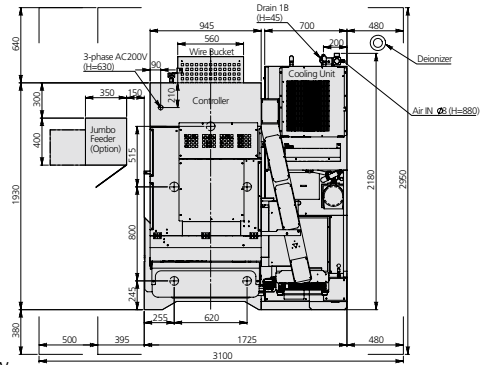
VZ300L



Front View

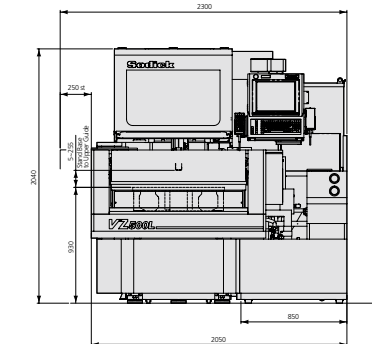


Side View

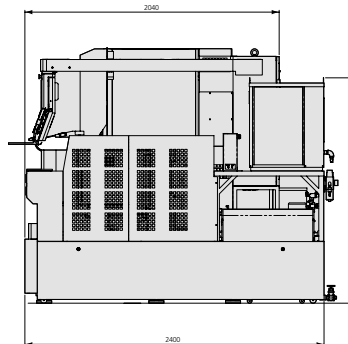


Top View

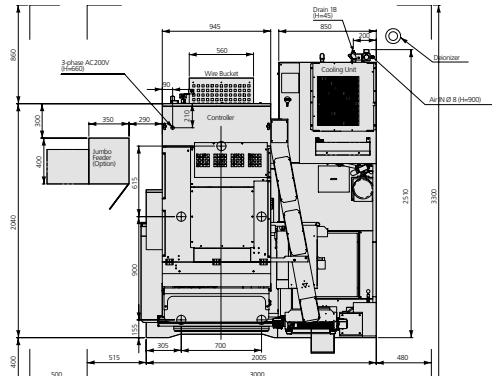
VZ500L



Front View



Side View



Top View

· All CE spec machines have external transformer with dimension of ca. 650 x 460 x 540mm

Machine Tool	VZ300L	VZ500L
Max. workpiece dimensions (WxDxH)	780 x 570 x 215 mm	960 x 670 x 245 mm
Max workpiece weight	500 kg	850 kg
Work tank dimensions (WxD)	810 x 650 mm	990 x 750 mm
X-/Y-/Z- axis travel	350 x 250 x 220 mm	500 x 350 x 250 mm
U axis x V axis travel	80 x 80 mm	80 x 80 mm
Taper angle (at workpiece thickness of 120mm)	±15 °	±15 °
Wire diameter	ø 0.15 ~ ø 0.3 mm	ø 0.15 ~ ø 0.3 mm
Wire feed speed (max.)	420 mm/sec	420 mm/sec
Wire tension	3 ~ 23 N	3 ~ 23 N
Machining method	Flushing / Submerged	Flushing / Submerged
Distance from floor to table top	900 mm	930 mm
Wire bobbin weight	8 kg	8 kg
Machine dimensions (WxDxH) (including power supply, supply tank)	1,895 x 2,180 x 1,960 mm	2,300 x 2,590 x 2,040 mm
Machine installation space (WxD)	2,600 x 2,950 mm	3,000 X 3,300 mm
Machine weight (including power supply)	2,400 kg	2,950 kg
Air flow	0.5 MPa 30 NL/min	0.5 MPa 30 NL/min
Total power input	3-phases 50/60Hz 11 KVA	3-phases 50/60Hz 11 KVA

Dielectric Tank	VZ300L	VZ500L
External dimensions (WxDxH)	710 x 2,070 x 1,800 mm	860 x 2,400 x 1,810 mm
Dielectric capacity	370 kg	400 kg
Required amount	550 l	840 l
Filtration	2 replaceable paper filter (internal-pressure type)	2 replaceable paper filter (internal-pressure type)
Deionizer	Ion-exchange resin(18-lit.type)	Ion-exchange resin(18-lit.type)

Sodick

create your future

Sodick Europe Ltd.

Rowley Drive, Baginton
Coventry, CV3 4FG
United Kingdom

Phone +44 (0) 24 7621 4314
Fax +44 (0) 24 7630 5680

Sodick Contact

email europe@sodick.eu.com
online www.sodick.org